

W. Smith Jr. Elementary School

Port NOLA owns the property around W. Smith Jr. Elementary School, and the school is located inside the proposed terminal footprint.

Next Steps

The sooner the new school is built, the less impact terminal construction will have on students.



Port NOLA is ready to fund the new school now.



Port NOLA is in discussions with the School Board to agree on a path forward.



Port NOLA will provide funds to the School Board for the construction of a new, modern school.



Port NOLA supports a public process involving the community and honoring the history of Violet Consolidated.

Location

Port NOLA owns most of the undeveloped land in Violet. We have identified two potential locations for the new W. Smith Jr. Elementary School.



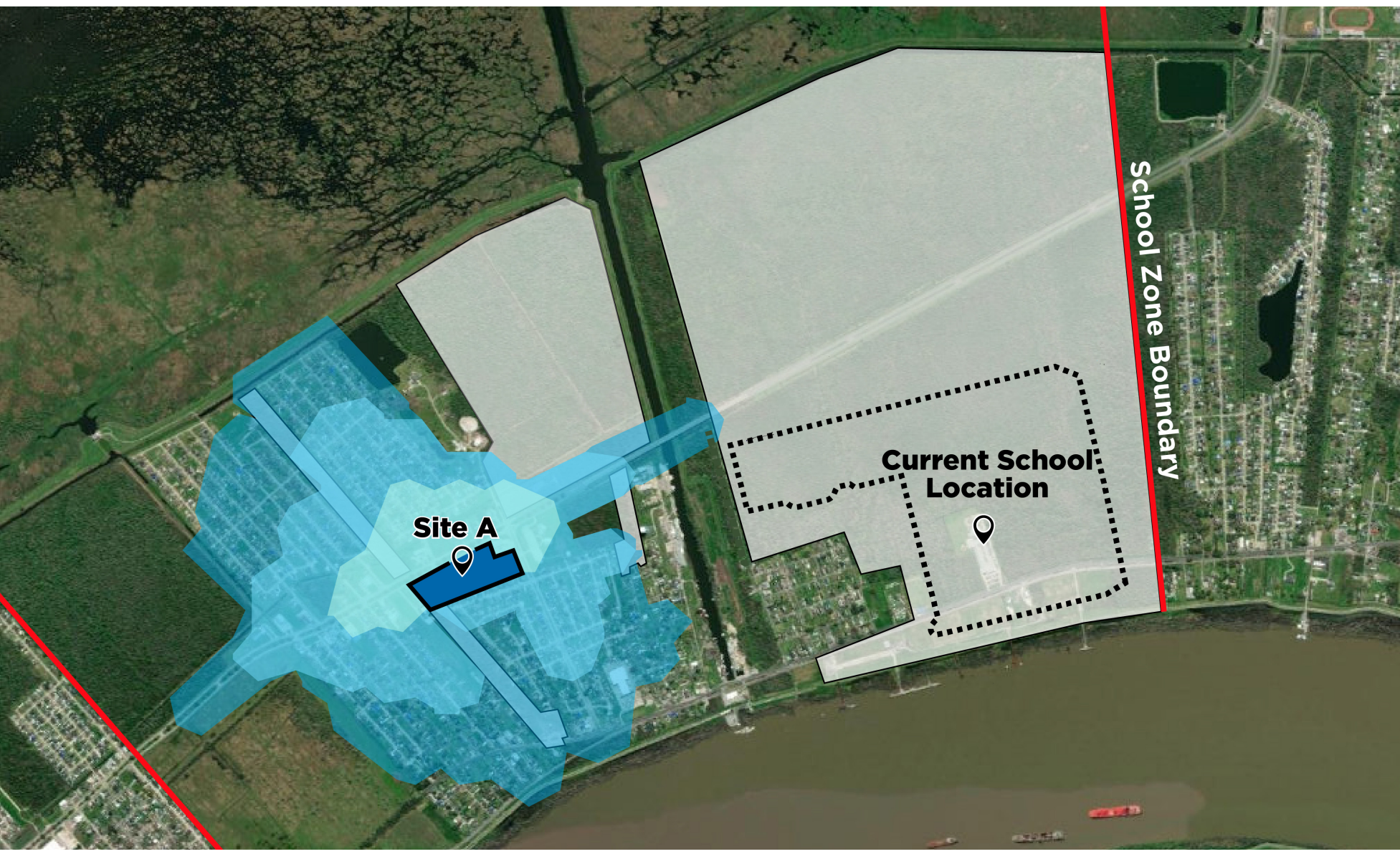
Walkability

5 minute walk 10 minute walk 15 minute walk

CURRENT LOCATION



NEW LOCATION: SITE A



NEW LOCATION: SITE B



Last Revised: February 2023