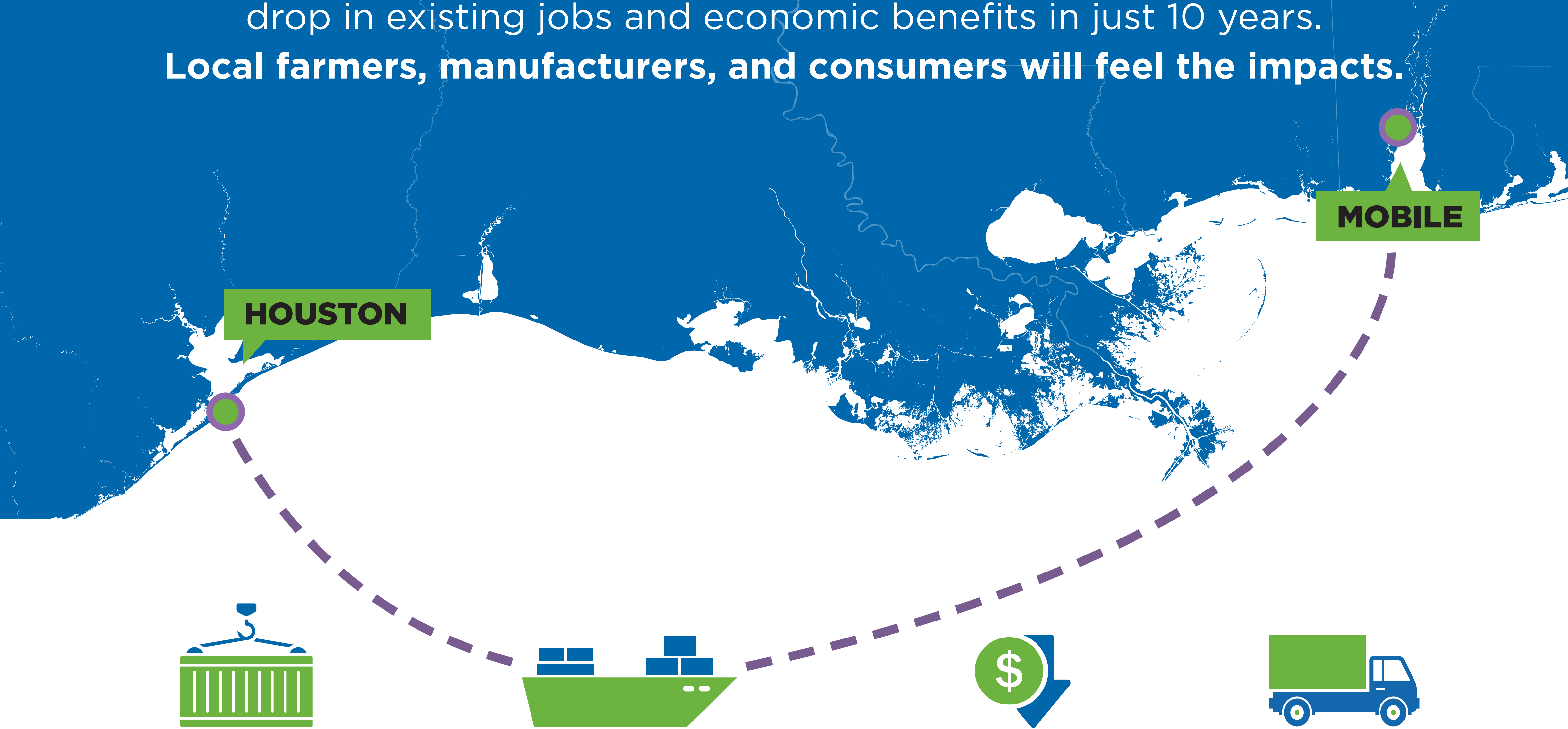


# Economic Loss Without the Louisiana International Terminal

Without the proposed terminal, Louisiana is projected to see a major drop in existing jobs and economic benefits in just 10 years.

**Local farmers, manufacturers, and consumers will feel the impacts.**



HOUSTON

MOBILE

Without a new container terminal further downriver from the Crescent City Connection, Louisiana won't be able to serve larger ships.

International shipping companies would skip Louisiana, taking their business to competing ports like Houston and Mobile instead.

The number of existing jobs and tax revenue in Louisiana would decrease.

Logistics-related services and business opportunities would be lost.

## The Result?

By 2033:

↓ **9,552**

existing jobs lost

↓ **\$205M**

in state taxes lost

↓ **\$10.3B**

in industry sales lost

## Louisiana with the Louisiana International Terminal by 2050

✓ **18K+**

new direct and indirect jobs

✓ **\$1B+**

new state tax revenue

✓ **\$97.3B**

gained in industry sales