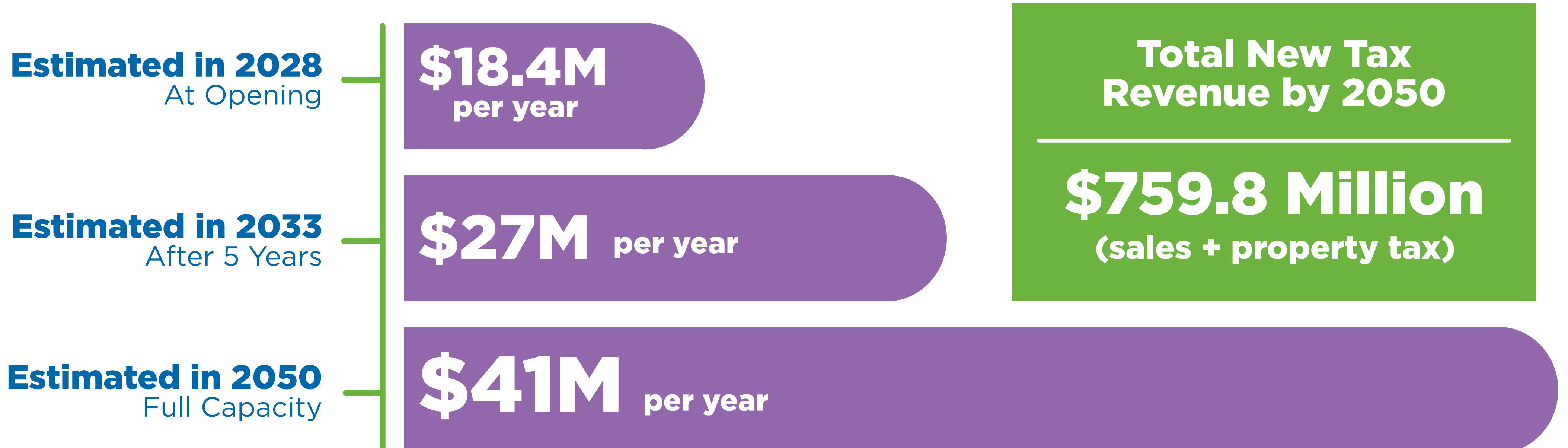


# Projected New Tax Revenue

## for St. Bernard Parish

Based on an updated economic study completed by the LSU Economics & Policy Research Group as of February 2023



Source: Lewis Terrell and Associates, Louisiana International Container Growth: The Economic Impact of the Louisiana International Terminal 2023 Q1 Update. February 2023

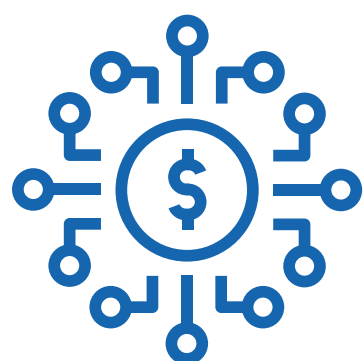
## What Generates Tax Dollars?

### Property Tax

- Terminal operators will own improvements and equipment on the terminal, which are taxable
- Private companies off property involved in trade related to the Louisiana International Terminal will also pay property taxes:
  - Maritime services (like waterborne transport)
  - Warehousing and transportation
  - Value-added services (like packaging)
  - Others who sell retail goods, real estate services, healthcare, dining, and more

### Sales Tax

- Direct sales and use taxes will apply to the private partners' construction and equipment costs.
- Sales taxes will also be collected on taxable goods and services both on and off the terminal.



Increased tax revenues will help St. Bernard and the state to invest in...

