

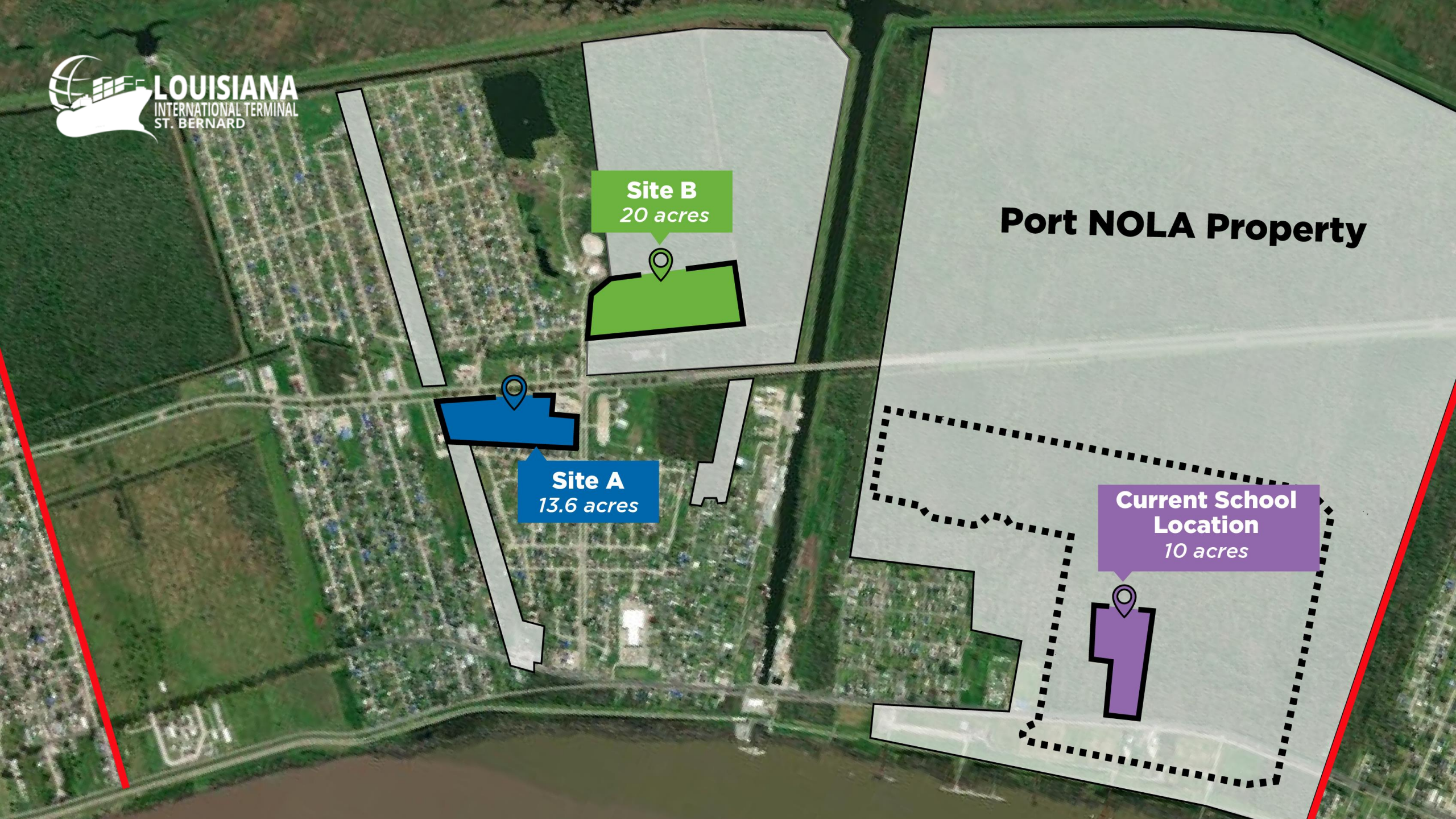
# W. Smith Elementary Relocation

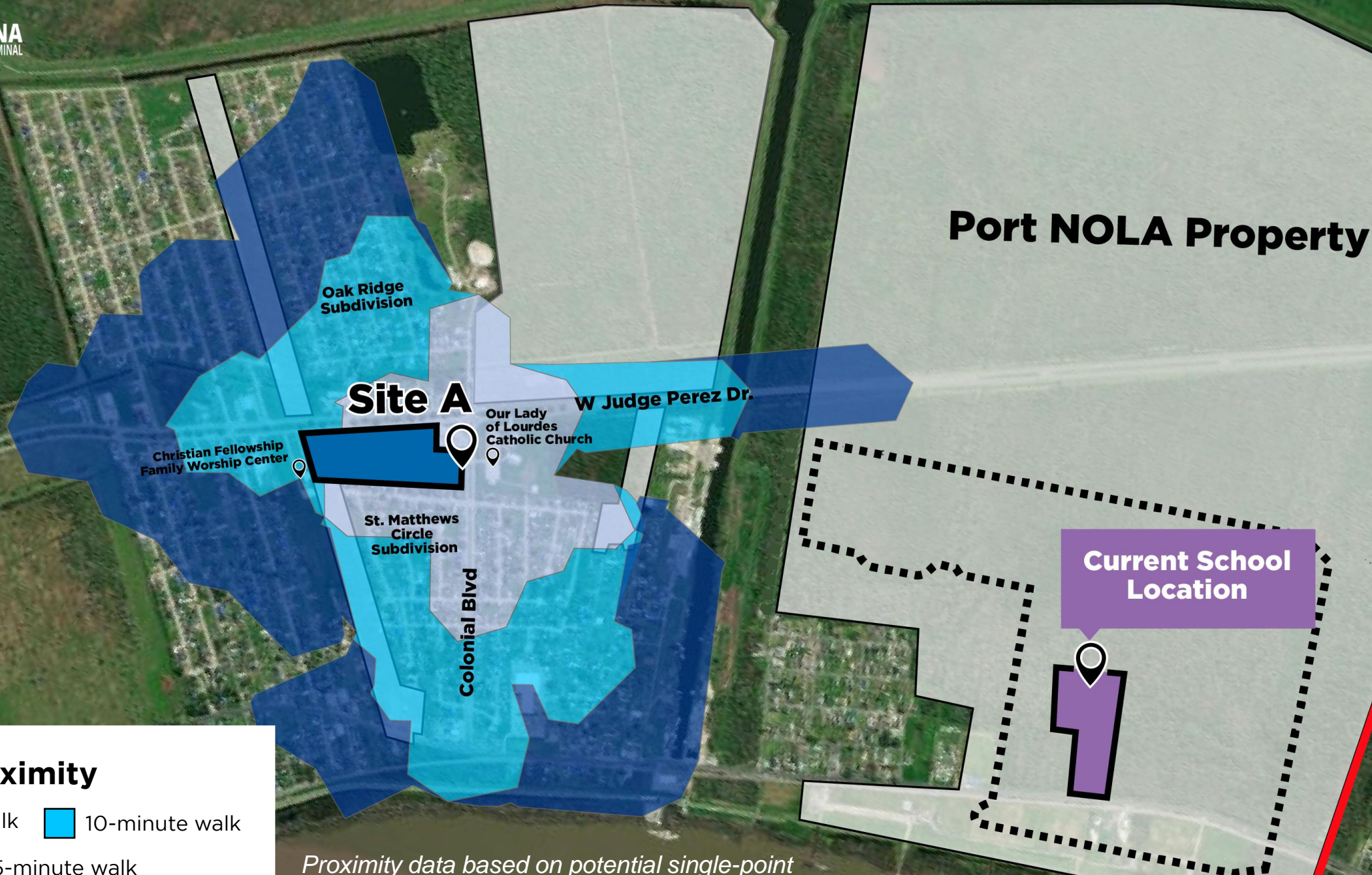
**Site B**  
20 acres

**Site A**  
13.6 acres

**Current School Location**  
10 acres

**Port NOLA Property**

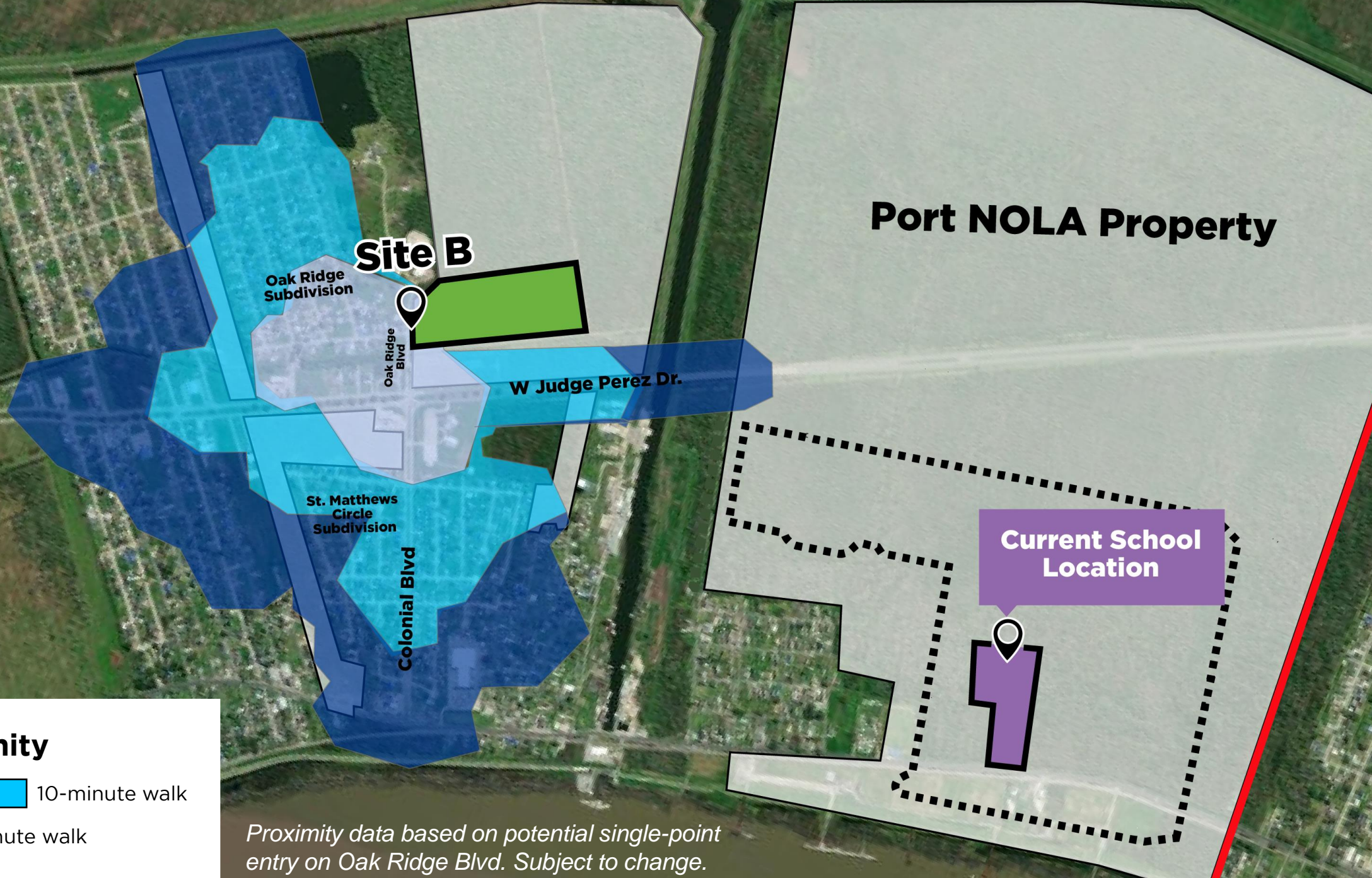




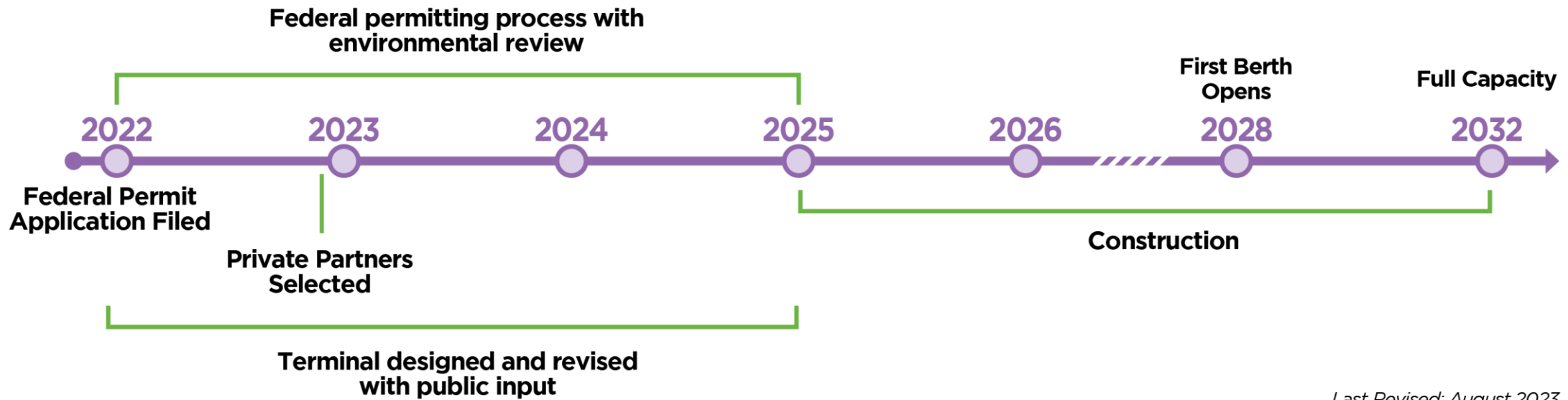
**Proximity**

- 5-minute walk
- 10-minute walk
- 15-minute walk

*Proximity data based on potential single-point entry on Colonial Blvd. Subject to change.*



# Project Timeline



*Last Revised: August 2023*